



IDOT BRIDGE PLANS

Michael B. Mossman
CADD Supervisor
Bureau of Bridges and Structures
Phone: 217-782-1510
Email: Michael.Mossman@illinois.gov

IDOT BRIDGE PLANS

- ▣ Resources
 - CADD Roadway and Structure Project Deliverables Policy
 - CADD Structures Drafting Reference Guide
 - Bureau of Bridges and Structures Website
<http://www.dot.il.gov/bridges/brdocuments.html>
 - IDOT CADD Support
<http://www.dot.il.gov/cadd.html>

IDOT BRIDGE PLANS

- ▣ Checklists
 - Bridge Manual
 - CADD Structures Drafting Reference Guide
- ▣ Example Plans

IDOT BRIDGE PLANS

- ▣ Changes to CADD Structures Drafting Reference Guide
 - Minor editorial
 - Annotation scale
 - Models (what is acceptable)
 - When to keep or remove base sheet name
 - Print boundary
 - Consultant name/logo location
 - North arrows
 - Addendums / Construction Changes

IDOT BRIDGE PLANS

- ▣ MicroStation Configuration
 - Data
 - ▣ Bridge.tbl *
 - ▣ Scales.def
 - ▣ Units.

* Items not included with IDOT_v2011.exe

IDOT BRIDGE PLANS

- ▣ MicroStation Configuration
 - Dgnlib's
 - ▣ BridgeStyles.dgnlib
 - Bridge text styles
 - Bridge dimension style
 - ▣ IDOTLevel2011.dgnlib
 - Contains levels for all disciplines

IDOT BRIDGE PLANS

- ▣ MicroStation Configuration
 - Cell Libraries
 - Bridge cell libraries*
 - Sign structure cell libraries*

* Items not included with IDOT_v2011.exe

IDOT BRIDGE PLANS

- ▣ MicroStation Configuration
 - Seed Files
 - Ebridge_models.dgn*
 - Ebridge_individual.dgn*
 - Ebridge_in-house.dgn*

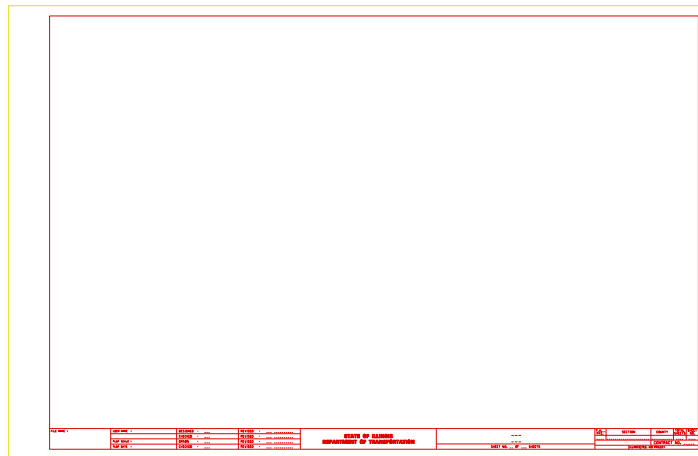
* Items not included with IDOT_v2011.exe

IDOT BRIDGE PLANS

- ▣ MicroStation Configuration
 - Symb
 - ▣ V8BridgeLineStyle.rsc
 - ▣ Fontlib.rsc

IDOT BRIDGE PLANS

- ▣ Borders



IDOT BRIDGE PLANS

- Comparison (Structure vs. Roadway)

ROADWAY BORDER (FROM IDOTroad.cad)						
FILE NAME *	USER NAME * USER#	DESIGNED -	REVISOR -	STATE OF ILLINOIS		
FILE#		DRAWN -	REVISOR -	DEPARTMENT OF TRANSPORTATION	SCALE	
		CHECKED -	REVISOR -			
		DATE -	REVISOR -			

STRUCTURES BORDER (FROM Bldg.cad)						
FILE NAME *	USER NAME *	DESIGNED -	REVISOR -	STATE OF ILLINOIS		
		DRAWN -	REVISOR -	DEPARTMENT OF TRANSPORTATION		
		CHECKED -	REVISOR -			
		DATE -	REVISOR -			

IDOT BRIDGE PLANS

- Comparison (Structure vs. Roadway)

ROADWAY BORDER (FROM IDOTroad.cad)						
STATE OF ILLINOIS DEPARTMENT OF TRANSPORTATION				SECTION	COUNTY	TOTAL SHEET SHEETS NO.
SCALE				SHEET NO. ... OF ... SHEETS	STA. TO STA.	CONTRACT NO.
ILLINOIS AD PROJECT						

STRUCTURES BORDER (FROM Bldg.cad)						
STATE OF ILLINOIS DEPARTMENT OF TRANSPORTATION				SECTION	COUNTY	TOTAL SHEET SHEETS NO.
SHEET NO. ... OF ... SHEETS				CONTRACT NO.		
ILLINOIS AD PROJECT						

IDOT BRIDGE PLANS

- Titles for all other sheets

SECTION	SUPERSTRUCTURE DETAILS	F.A.J. RTE.	SECTION	COUNTY	TOTAL SHEETS	SHEET NO.
	STRUCTURE NO. 084-0517	8159	110X-3VB-4	SANGAMON	78	36
SHEET NO. 11 OF 27 SHEETS		ILLINOIS FED. AID PROJECT CONTRACT NO. 72692				

IDOT BRIDGE PLANS

- Sheet Sequence
 - General Plan & Elevation
 - General Data
 - Footing Layout
 - Stage Construction Details
 - Temporary Barrier or Railing
 - Top of Slab Elevations
 - Top of Approach Slab Elevations
 - Superstructure
 - Superstructure Details

IDOT BRIDGE PLANS

- ▣ Sheet Sequence
 - Diaphragm Details (Integral or Semi-integral)
 - Bridge Approach Slab Details
 - Bridge Railing Details
 - Expansion Joint Details
 - Drainage Scuppers
 - Girder and Framing Details (Steel or Concrete)
 - Bearing Details
 - Abutment Details
 - Pier Details

IDOT BRIDGE PLANS

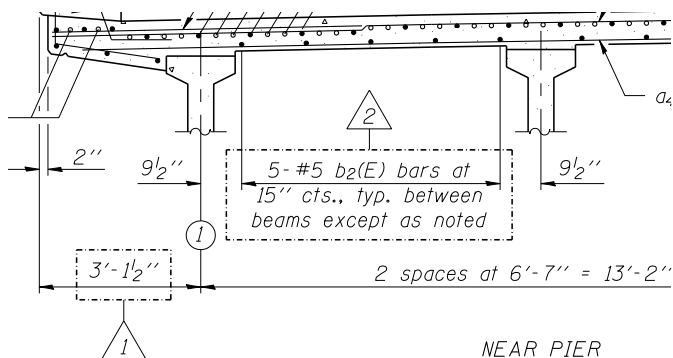
- ▣ Sheet Sequence
 - Foundation Details (includes piles)
 - Bar Splicer Assembly Details
 - Cantilever Forming Brackets
 - Soil Boring Logs

IDOT BRIDGE PLANS

- ▣ Base Sheets
 - Do Base Sheets have to be used?
 - Base Sheet Names (when to remove)
 - Do not "X" out or delete unnecessary details

IDOT BRIDGE PLANS

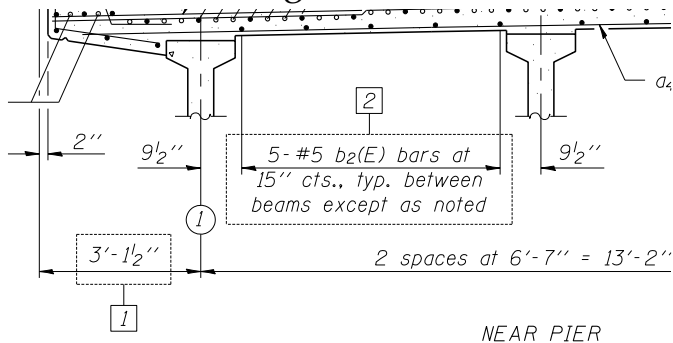
- ▣ Addendums



DESIGNER NAME	REVISED	▲	4/28/2011	D.P.N.	DEPA
CHECKER NAME	REVISED	▲	5/15/2011	D.P.N.	
TECHNICIAN NAME	REVISED	---			
CHECKER INITIALS	REVISED	---			

IDOT BRIDGE PLANS

▣ Construction Changes



DESIGNER NAME	REVISED	[1]	4/28/2011	D.P.N.	DEPA
CHECKER NAME	REVISED	[2]	5/15/2011	D.P.N.	
TECHNICIAN NAME	REVISED	---			
CHECKER INITIALS	REVISED	---			

IDOT BRIDGE PLANS

▣ Text Styles

- Br1:001scale100
- Br1:001scale140
- Br1:001scale200
- Br1:001scale_boring
- Br1:001scale_TOS_Elev

▣ Dimension Style

- Bridge1:001

▣ Annotation Scale

IDOT BRIDGE PLANS

- ▣ Text/Dim Styles using different drawing methods:
 - Scaled 1/scale factor to fit 1:1 border
 - Reference at 1/scale factor to 1:1 border
 - Insert border at scale factor
 - Reference 1:1 to border scaled by scale factor in separate dgn or model

IDOT BRIDGE PLANS

- ▣ Questions / Comments?

IDOT BRIDGE PLANS

▣ Feedback...

District 1	Shawn Ley	847-705-4008	Shawn.Ley@illinois.gov
District 2	James Hogenson	815-284-5490	James.Hogenson@illinois.gov
District 3	Mike Wasilewski	815-434-8952	Michael.Wasilewski@illinois.gov
District 4	Brian Keith	309-671-3395	Brian.Keith@illinois.gov
District 5	Justin Cearlock	217-466-7393	Justin.Cearlock@illinois.gov
District 6	Gregory Sparks	217-557-4718	Gregory.Sparks@illinois.gov
District 7	Mona Steffen	217-342-8313	Mona.Steffen@illinois.gov
District 8	Sandy Phillips	618-346-3231	Sandra.Phillips@illinois.gov
District 9	Barbara Lavender	618-351-5221	Barbara.Lavender@illinois.gov
Engineering Systems (BIP)	Jim Leaf	217-785-4090	Jim.Leaf@illinois.gov
Bureau of Bridges & Structures	Michael Mossman	217-782-1510	Michael.Mossman@illinois.gov